

Description

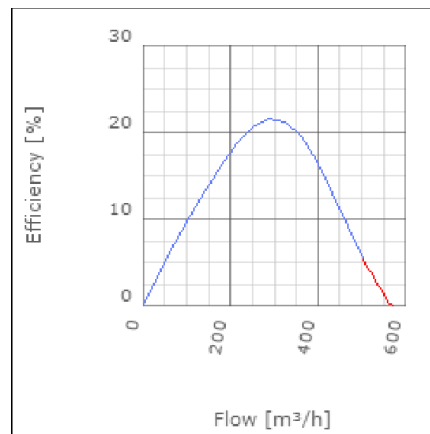
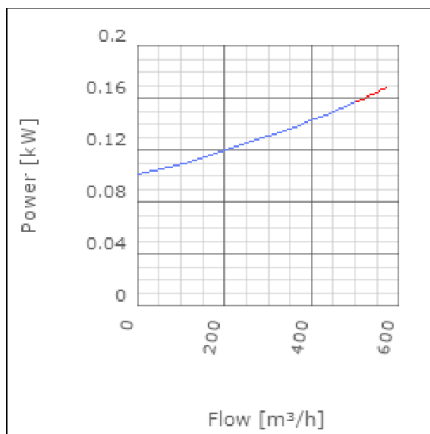
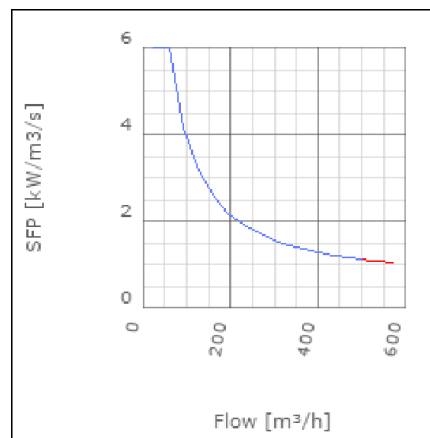
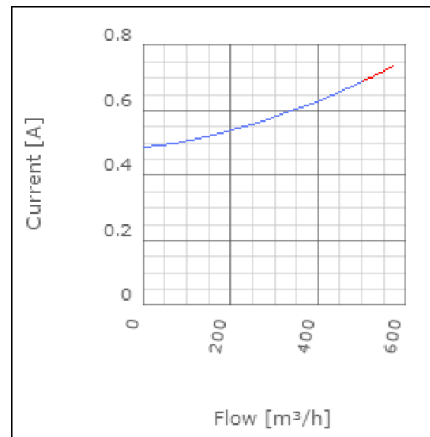
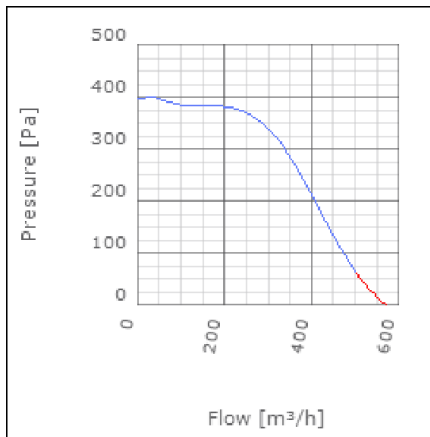
IRE is a range of insulated in-line centrifugal duct fans. They provide high pressure with low sound level. The IRE fans have good sound and fire insulation qualities provided by a 50mm pad of mineral wool. The high quality ball bearing mounted external rotor motors are maintenance free. They can be speed controlled from 0-100% by voltage variation. All motors are protected by approved thermo contacts. All 3-phase motors have ready fitted thermo contact leads for alarm functions etc. The fans have a strong galvanized steel housing incorporating a swing out design of the fan motor and impeller for easy cleaning and inspection.



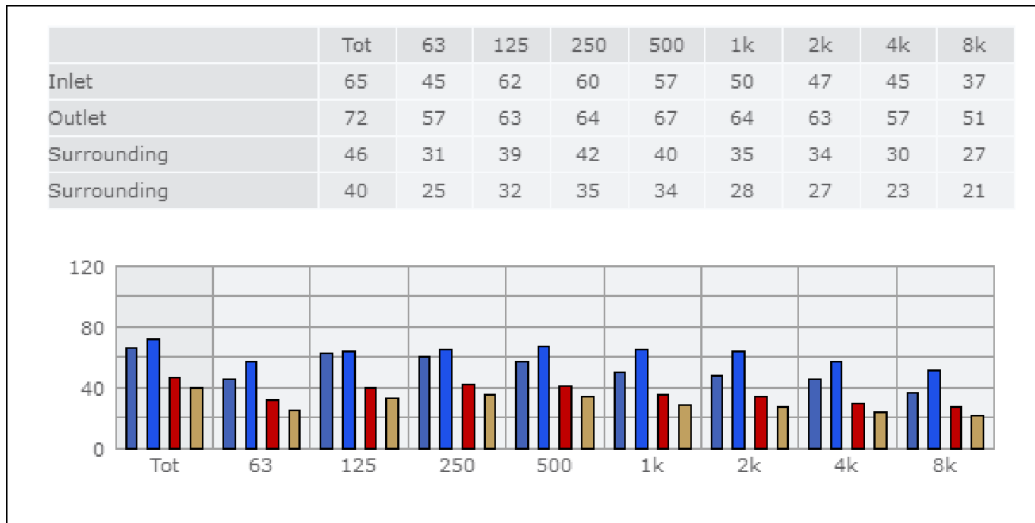
Technical data

| Parameter | Value | Unit |
|---|---------|-------|
| Voltage | 230 | V |
| Phase | 1 | ~ |
| Frequency | 50 | Hz |
| Power | 0.16 | kW |
| Current | 0.68 | A |
| R.p.m. | 2200 | r/m |
| Max. temperature of transported air | 55 | °C |
| Max. temperature of transported air when speed-controlled | 55 | °C |
| Sound pressure level at 3 m | 39 | dB(A) |
| Length | 400 | mm |
| Width | 365 | mm |
| Height | 265 | mm |
| Weight | 13 | kg |
| Enclosure class, motor | 44 | IP |
| Insulation class, motor | F | |
| Capacitor | 4 | µF |
| Duct connection | ø160 mm | |

Diagrams



Sound



Parameter

Distance: 3.000
 Propagation type: Hemi-spherical
 Equivalent absorption area: 20.00

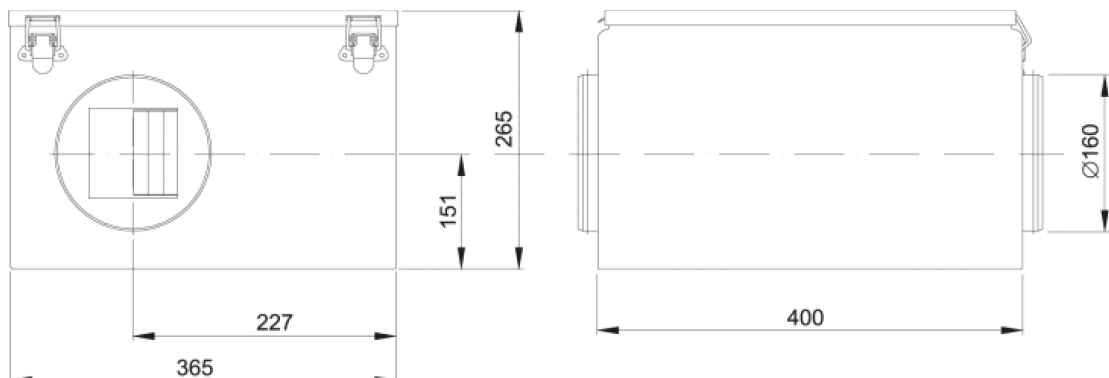
Checked point

Flow 320.144m³/h
 Static pressure 317Pa

Working point

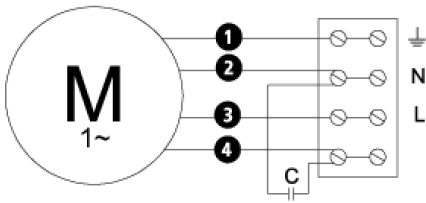
Flow 321.42m³/h
 Static Pressure 320Pa
 Power 0.13kW
 Speed 0r/m
 Current 0.59A
 Voltage 230V
 Efficiency 21.366%
 SFP 0kW/m³/s

Dimensions



Wiring diagram

4040001



- Ⓜ = Fan Motor
- Ⓜ1 = Fan Motor
- Ⓜ2 = Fan Motor
- Ⓜ3 = Rotor Motor
- ① = Yellow/Green
- ② = Black
- ③ = Blue
- ④ = Brown
- ⑤ = White (TW)
- ⑥ = Orange
- ⑦ = Grey
- ⑧ = Red
- ⑨ = Green
- ⑩ = Violet

Accessories

ETFV-94A
 FRE 6
 VRDE 1,5
 VRS 1,0
 VRTEC

Electrical accessories

FLF 160
 FLK 160
 BSV 160
 YG 160
 LDC 160